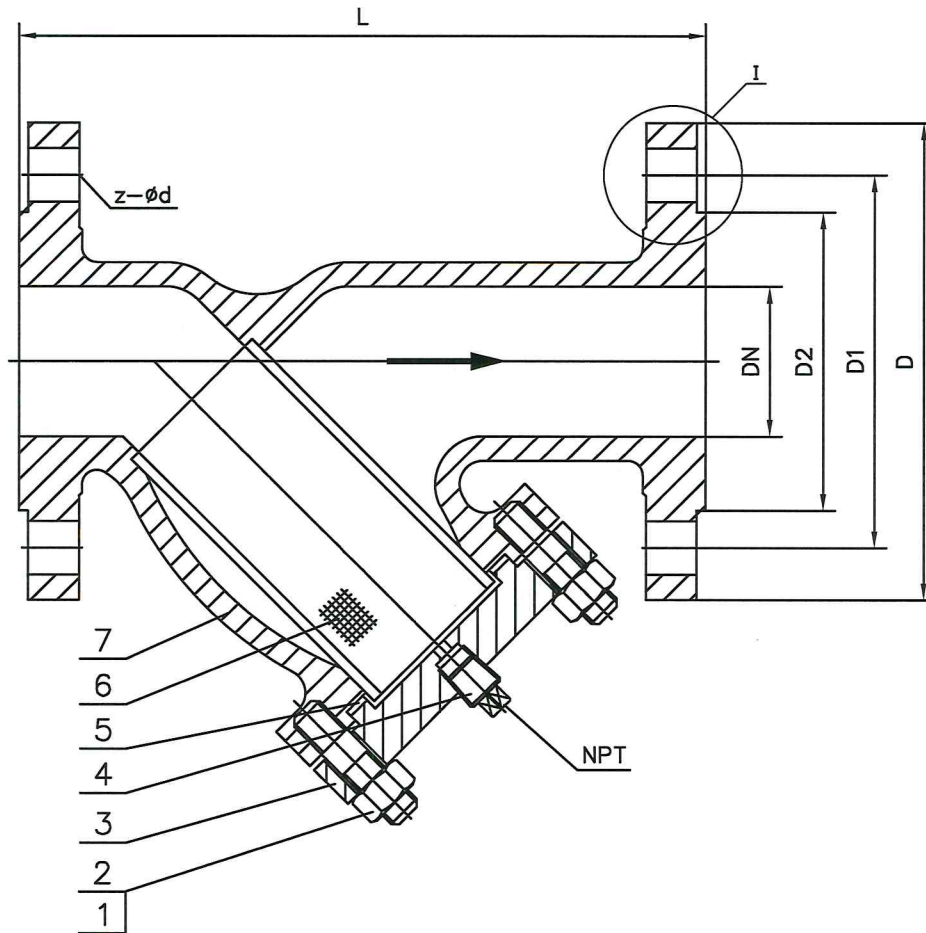


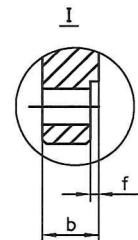
Performance Specification			
PN	16		
Test Pressure	Shell test	2.4	MPa
	Seal test	-	
	Back seal Test	-	
	Air Seal Test	-	

NPS	DN	Typical Dimensions				PN16 Flange Dimensions					
		L	-	-	-	D	D1	D2	b	f	z- ϕ d
-	100	350	-	-	-	220	180	158	20	3	8-18



Notice:

- 1.Design by ASME B16.34
- 2.RF Flange by EN 1092-1
- 3.Valves tested by EN 12266-1
4. 1mm width of opening



NO	PART NAME	MATERIAL	REMARKS	STRAINER VALVE, Y-TYPE			FIG NO
7	Body	A351-CF3		DESIGN BY Chenjc 20200407			CHINA-BAOYI (VALVE) GROUP
6	Filter Screen	SS304					
5	Gasket	FLEXIBLE GRAPHITE/304		CHECKED BY			DRAWING NO
4	Plug Fitting	SS304L		STANDARD BY			
3	Bonnet	SS304L		APPROVED BY			REV
2	Bonnet Bolt	ASTM A194 Gr.8		THE USER CONFIRM			DATE
1	Bonnet Bolt Nut	ASTM A193 Gr.B8					